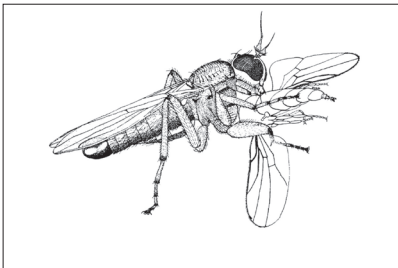


Lawrence J. HRIBAR
 Florida Keys Mosquito Control District
 503 107th Street
 Marathon, Florida 33050
 USA
 E-mail: lhribar@keysmosquito.org

This paper was accepted on 25 September 2013.

Editum: 19 December 2013.



Short note – Kurzmitteilung

No. 3/2013 Nr. 3/2013

Behaviour – Verhalten

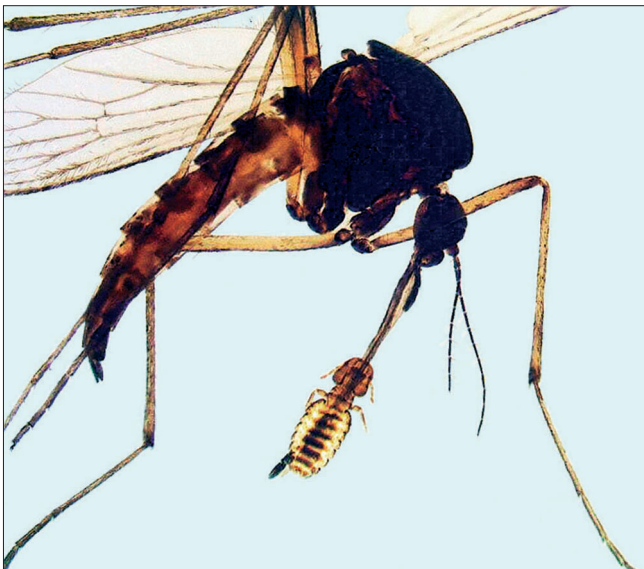
**New record of a chewing louse on a species of
Ochlerotatus LYNCH-ARRIBÁLZAGA (Diptera: Culicidae)**

[Neuer Fund eines Mallophagen an einer Art von
Ochlerotatus LYNCH-ARRIBÁLZAGA (Diptera: Culicidae)]

by

Arne KÖHLER

Müncheberg (Germany)



On 13th May 2013 a female mosquito of *Ochlerotatus* spec. was caught while it attacked a human at Serwest (near Chorin, 52°56'26"N 13°56'34"E, federal state Brandenburg, Germany). Attached to the mosquito was a 3rd instar of the chewing louse *Damalina (Cervicola) meyeri* (TASCHENBERG, 1882) (Ischnocera: Bovicolidae) (Figs 1, 2). This chewing louse clung with its mandibles and fore legs to the host's proboscis (Fig. 3).

Phoresy – using other animals for transport to new hosts or habitats – is widespread behaviour among chewing lice, mostly involving hippoboscid flies (Diptera: Hippoboscidae). Not less than 405 cases

Fig. 1: *Damalina meyeri* (TASCHENBERG) on *Ochlerotatus* spec.